

## Universal Stirrer for screen printed and classical electrodes

Type: ST3.C

### Description

- Precision Maxon motor with gearbox and encoder
- ST3 is controlled by PC software
- ST3 allows the solution to be mixed and the particles to be optimally transferred to the surface of the printed or conventional electrodes.
- The construction of stirrer assures the optimum mass transport with the minimum hydrodynamic noise.
- The stirrer is manufactured from quality materials and suitable chemical measurements.
- Revolutions range: 20 - 1300 rpm (with resolution 1 rpm).



### Physical Parameters

#### *Dimensions:*

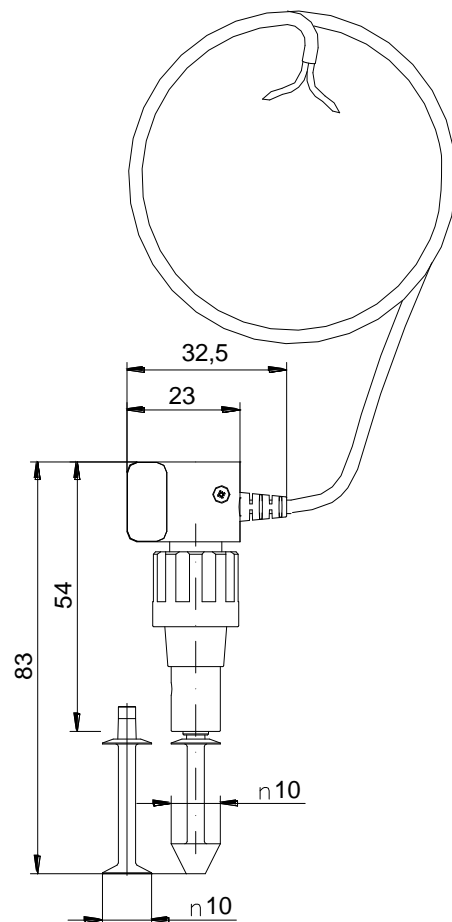
Weight: 36 gms  
 Length: 83 mm  
 Diameter: 23 mm  
 Cable length: 1 m

#### Delivery ST3 contains

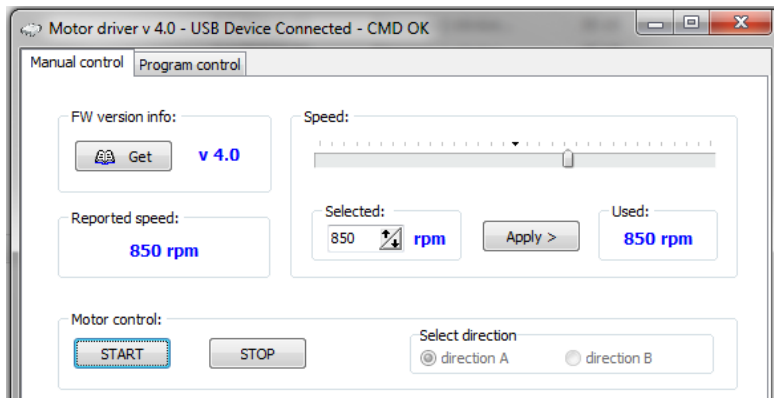
- Stirrer ST3.C
- 1 piece of PEEK Conical impeller
- 1 piece of PEEK Disk impeller
- Control unit
- Software
- USB cable 1 m
- Manual

### References

1. J. Krejci, R. Sejnohova, V. Hanak, H. Vranova, Screen Printed Electrodes with Improved Mass Transfer, New perspectives in biosensors technology and applications (2011) 291-311

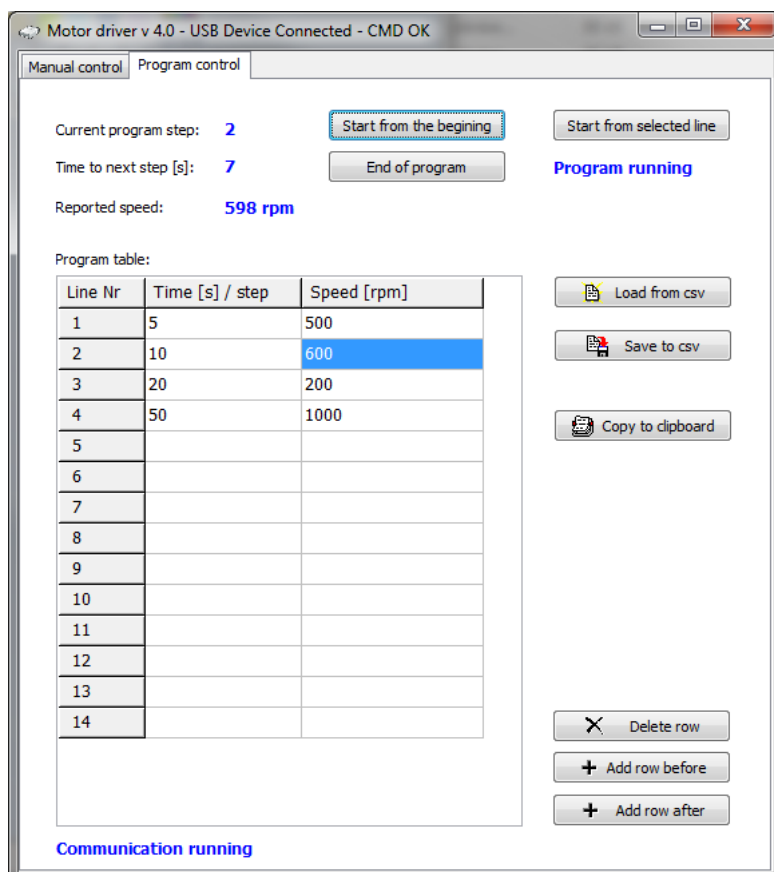


## Software for control ST3.C



### Manual control

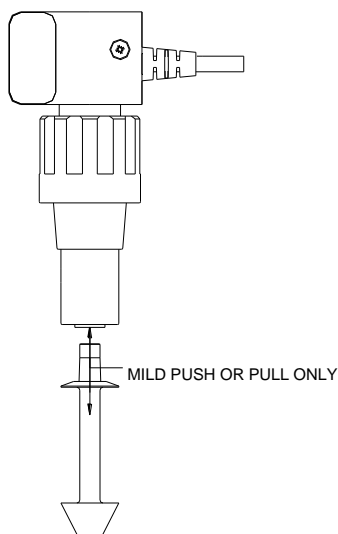
For easy rpm setup. In the range of 20 - 1300 rpm.



### Program control

For variable rpm settings. The settings can be saved and opened on the next measurement.

### Instructions for insertion the attachment into the stirrer



### Recommended vessel

TC4, TC5, TC6

### Recommended connector

KA1.C, KA2.C

### Recommended sensors

AC1.W\*.R\*, AC2.W\*.R\*  
AC4.W\*

### Recommended classical electrode

WCEc.W\*.D\*, RCEc.R\*, ACEc  
Paste electrode  
Electrodes with salt bridge

### Hydrodynamics of stirring

- Screen printed electrodes



- Classical electrodes



### Ordering information

- The order is specified by the whole product code
- Minimum order quantity - 1 stirrer
- Delivery time for standard ST3.C is 4 weeks from receipt of order
- Delivery time for non-standard ST3.C depends on final technical specification of the order

Example of Order 2 pieces ST3.C

Datasheet: [ST3.C](#)